



Figure 1. Physical photo of TEC5V6A-NT

### FEATURES

- High Efficiency:  $\geq 90\%$
- Maximum Output Current: 6A
- Maximum Output Voltage:  $\pm V_{VPS}$
- Actual Object Temperature Monitoring
- High Stability:  $0.01^\circ\text{C}$
- High Reliability
- Zero EMI
- Compact Size
- 100 % lead (Pb)-free and RoHS compliant

### DESCRIPTION

The TEC5V6A-NT is an electronic module designed for driving TECs (Thermo-Electric Coolers) with high stability in regulating the object temperature, high energy efficiency, zero EMI, and small package. Figure 1 is the photo of the actual TEC5V6A-NT.

This module provides interface ports for users to set the desired object temperature, i.e. set-point temperature; the maximum output voltage across TEC; and the compensation network. The compensation network compensates the high order thermal load and thus stabilizes the temperature control loop.

It provides these functions: thermistor T-R curve linearization, temperature measurement and monitoring, temperature control loop status indication, TEC voltage

monitoring, power up delay, and shut down.

The TEC5V6A-NT comes with a high stability low noise 3.0V voltage reference which can be used for setting the desired object temperature by using a POT (Potentiometer) or a DAC (Digital to Analog Converter). When using this reference for setting the set-point temperature, the set-point temperature error is independent of this reference voltage. This is because the internal temperature measurement network also uses this voltage as the reference, the errors in setting the temperature and measuring the temperature cancel with each other, setting the object temperature with higher stability. This reference can also be utilized by an ADC (Analog to Digital Converter), for the same reason, the measurement error will also be independent of the reference voltage, resulting in a more accurate measurement.

Figure 2 is the real size top view of the controller showing the pin names and locations with the actual size. TEC5V6A-NT pin functions are shown in Table 1.

**Warning:** This controller module can only be soldered manually on the board by a solder iron of  $< 310^\circ\text{C}$  ( $590^\circ\text{F}$ ), it cannot go through a reflow oven process.

The TEC5V6A-NT is packaged in a 6 sided metal enclosure, which blocks EMIs (Electro-Magnetic Interferences) to prevent the controller and other electronics from interfering with each other.

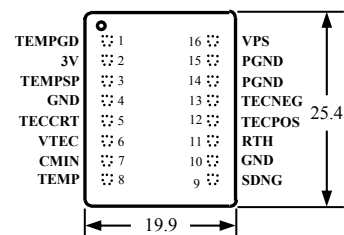


Figure 2. Pin names and locations

### SPECIFICATIONS

Table 1 Pin Function Descriptions

| Pin # | Pin Name      | Type                         | Description   |
|-------|---------------|------------------------------|---|
| 1     | <b>TEMPGD</b> | Digital output               | Temperature good indication. It is pulled high when the set-point temperature and the actual desired object temperature are $<0.1^{\circ}\text{C}$ in temperature difference when the set-point temperature range is $20^{\circ}\text{C}$ ; or $<3\text{mV}$ in voltage difference between the voltages of TEMP and TEMPSP nodes. On this pin, there is an internal pull up resistor of $10\text{k}$ tied to the VPS rail. When going low, this pin is pulled down by an open drain FET with a resistance of $250\Omega @ V_{VPS} = 5\text{V}$ .<br><br>*A <b>100nF capacitor to GND</b> needs to be added to this TEC controller manufactured before March 27 <sup>th</sup> , 2012. Otherwise, there will be an interference of $V_{p-p}=200\text{mV}$ , $f=500\text{kHz}$ . |
| 2     | <b>3VR</b>    | Analog output                | Reference voltage output, 3V. It can be used by a POT or DAC for setting the set-point temperature voltage on the TEMPSP pin and/or a DAC for measuring the temperature through the TEMP pin. The maximum sourcing current capability is 1.5mA and the maximum sinking is 4mA with a stability of $<50\text{ppm}/^{\circ}\text{C}$ max.   |
| 3     | <b>TEMPSP</b> | Analog input                 | Object set-point temperature input port. It is internally tied by a $4.99\text{M}\Omega$ resistor to the half value of the reference voltage, 1.5V. It is highly recommended to set this pin's voltage by using the controller's voltage reference. The lower limit of the setting voltage for this pin is 0.1V. Setting this pin to a $<0.1\text{V}$ voltage may cause the controller over cooling the object. This pin can also be set to a voltage that is about 0.2V away from the VPS rail. This pin can be set by using a POT or DAC.   |
| 4     | <b>GND</b>    | Ground                       | Signal ground for the POT, ADC, DAC and the thermistor, see Figure 4.   |
| 5     | <b>TECCRT</b> | Both analog input and output | TEC control voltage. It can be left unconnected or used to control the TEC voltage directly. Set TECCRT between 0V to VPS, the voltage across TEC will be:<br>TEC voltage = $V_{VPS} - 2 \times V_{TECCRT}$ . It can also be used to configure the maximum voltage across the TEC: Max. TEC voltage = $V_{VPS} \times R_m / (R_m + 10\text{k})$ , where $R_m$ is the resistance of the two resistors one between TECCRT to GND and the other between TECCRT to VPS, see Figure 4.   |
| 6     | <b>VTEC</b>   | Analog output                | TEC voltage indication. TEC voltage = $[\text{max. TEC voltage}] \times [V_{VPS} - 2 \times V_{VTEC}] / V_{VPS}$ . When TECCRT is used to control the TEC voltage directly, measure TECCRT to derive the TEC voltage instead, and use this formula: TEC voltage = $V_{VPS} - 2 \times V_{TECCRT}$ . The maximum driving current of pin VTEC is 30mA and the output voltage swing is 0V to $V_{VPS}$ .   |
| 7     | <b>CMIN</b>   | Analog input                 | Compensation input pin for the thermal control loop. Leave it open in production. When prototyping, use this pin with a tuner on the evaluation board, TECEV104 (produced by ATI) to tune the compensation network to match the characteristics of the thermal load.  |
| 8     | <b>TEMP</b>   | Analog output                | Actual object temperature. It swings from 0V to $V_{VPS}$ , corresponds to $15^{\circ}\text{C}$ to $50^{\circ}\text{C}$ when $V_{VPS}$ equals to 5V. See the curve below.   |
| 9     | <b>SDNG</b>   | Digital input                | Shut down control. When pulled low, it shuts down the controller. Leave it open or pull it high to activate the controller. The threshold voltage is 1.4V. This pin is internally pulled up by a resistor of $100\text{k}$ to VPS.  |
| 10    | <b>GND</b>    | ground                       | Signal ground, internally connected to Pin 4 GND. Can be used for connecting the thermistor   |
| 11    | <b>RTH</b>    | Analog input                 | Inverting input to error amplifier.   |
| 12    | <b>TECPOS</b> | Analog power output          | Connects to TEC positive terminal   |



|    |               |                     |   |
|----|---------------|---------------------|---|
| 13 | <b>TECNEG</b> | Analog power output | Connects to TEC negative terminal   |
| 14 | <b>PGND</b>   | Power ground        | Power ground for connecting to the power supply                                   |
| 15 | <b>PGND</b>   | Power ground        | Power ground for connecting to the power supply, internally connected with pin 14 |
| 16 | <b>VPS</b>    | Power input         | Positive power supply rail. The value is 5V.                                      |

Table 2. Characteristics ( $T_{\text{ambient}}=25^{\circ}\text{C}$ )

| Parameter                                | Test Conditions   | Value  | Unit/Note                           |
|--|---|--|-------------------------------------|
| Object* temp. stability vs. ambient temp | $V_{\text{VPS}}=5\text{V}, R_{\text{LOAD}}=0.8\Omega$   | 0.0002   | $^{\circ}\text{C}/^{\circ}\text{C}$ |
| Object temp. vs. set-point offset        | $T_{\text{AMBIENT}}$ is $0 \sim 50^{\circ}\text{C}$ , set-point temp. is $15^{\circ}\text{C} \sim 35^{\circ}\text{C}$ | $\pm 0.1^{\circ}\text{C}$ or $\pm 15\text{mV}$ |                                     |
| Object temp. response time               | $\leq 0.1$ to the set-point temperature at a $1^{\circ}\text{C}$ step   | $< 5$  | s                                   |
| Efficiency                               | $V_{\text{VPS}}=5\text{V}, R_{\text{LOAD}}=0.8\Omega$   | $\geq 90\%$                                    | -                                   |
| Max. output current                      | $V_{\text{VPS}}=5\text{V}, R_{\text{LOAD}}=0.8\Omega$   | 6  | A                                   |
| Max. output voltage                      | $V_{\text{VPS}}=5\text{V}, R_{\text{LOAD}}=0.8\Omega$   | $0 \sim V_{\text{VPS}}-0.3$                    | V                                   |
| PWM frequency                            |   | 500  | kHz                                 |
| Power supply voltage                     | —   | 4.5 ~ 5.5 (specify 5V)                         | V                                   |
| Set-point temp.** control voltage        | $V_{\text{IN}}=5\text{V}, R_{\text{LOAD}}=0.8\Omega$  | $0.1 \sim V_{\text{VPS}}$                      | V                                   |
| Default set-point temp. range***         | $V_{\text{VPS}}=3\text{V}$  | 15 ~ 35  | $^{\circ}\text{C}$                  |
| Operating temp. range                    | $V_{\text{IN}}=5\text{V}, R_{\text{LOAD}}=0.8\Omega$  | -40 ~ 85                                       | $^{\circ}\text{C}$                  |
| Storage temp. range                      |   | -55 ~ 125                                      | $^{\circ}\text{C}$                  |

\* Object temperature refers to the actual cold side temperature of the TEC, on where the object is mounted.

\*\* Set-point temperature is the temperature desired to have on the object.

\*\*\* Can be customized to any range according to requirement.

\*\*\*\* This TEC controller can only drive the TECs having  $> 1\Omega$  impedance, which equals  $V_{\text{MAX}}/I_{\text{MAX}}$ .

\*\*\*\*\* After many experiment, according to the parameter and the figuring method of  $R_{\text{load}}$ , we advise customers to use  $R_{\text{LOAD}}$  of  $0.8\Omega$ . We advise customers to use voltage of 6V as the power supply.

### BLOCK DIAGRAM

The block diagram of the controller is shown in Figure 3.

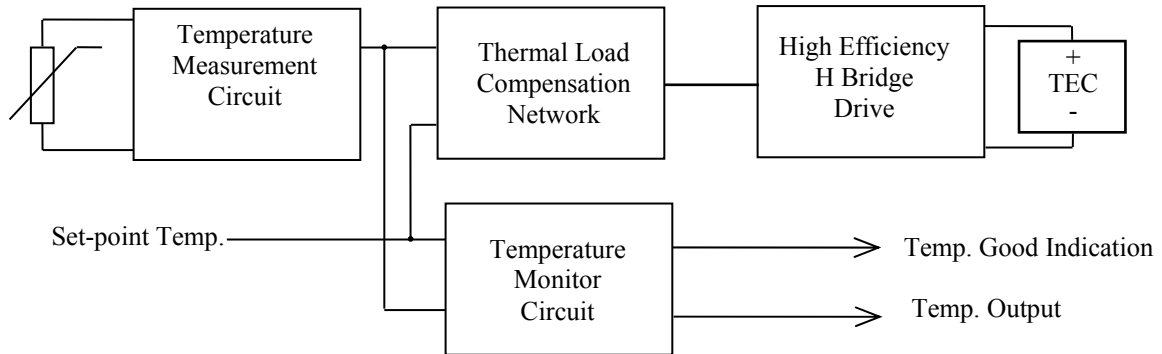


Figure 3. TEC Controller Block Diagram

### APPLICATIONS

TEC controller connections are shown in Figure 4.

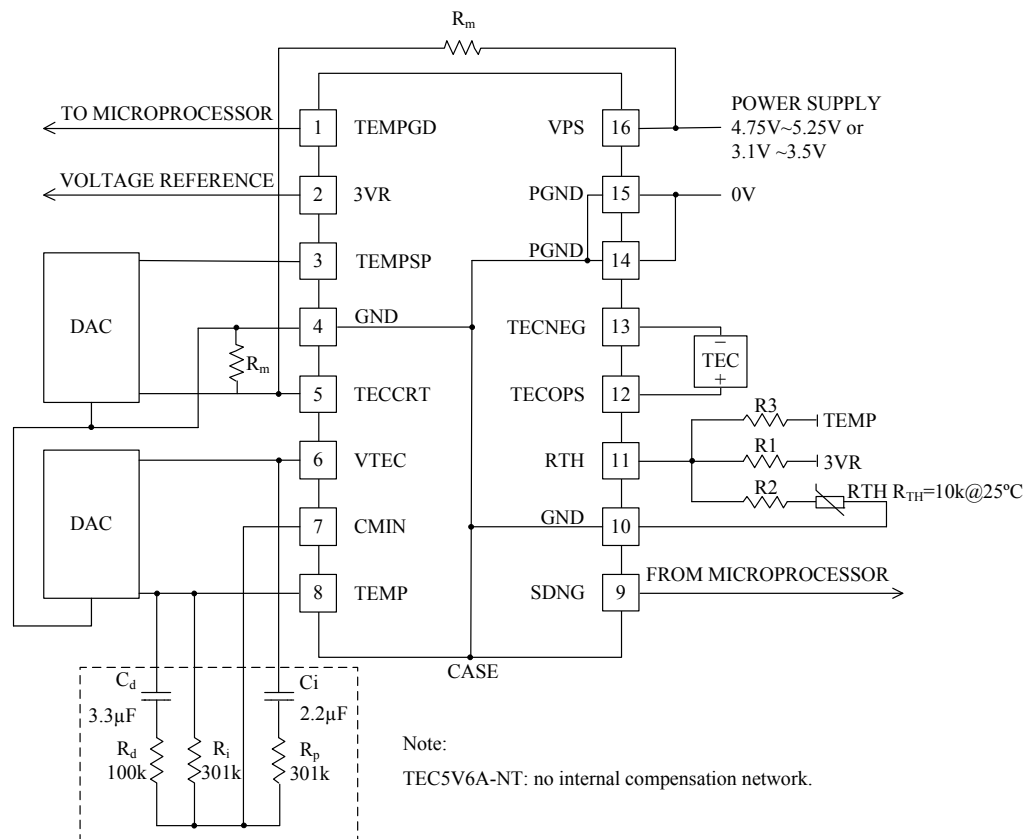


Figure 4. TEC Controller Connections

If you want to use this TEC controller for other applications not discussed here, such as use it with wave locker controllers, please consult us. The same as to other customizations, such as setting the TEMPSP by using a voltage source swings above 3V and/or  $V_{VPS}$ .

The TEC controller doesn't come with a default temperature setting network, which allows you to specify the temperature range by using the external resistors, R1, R2 and R3.

**Note:** This TEC controller doesn't come with an internal compensation network and we don't recommend using internal compensation network either. Implementing the network externally is highly recommended since it can be modified for driving different thermal load and/or the thermal load characteristics is not certain or fixed at the early design stage.

### Using TEC Controllers for Driving a Heater

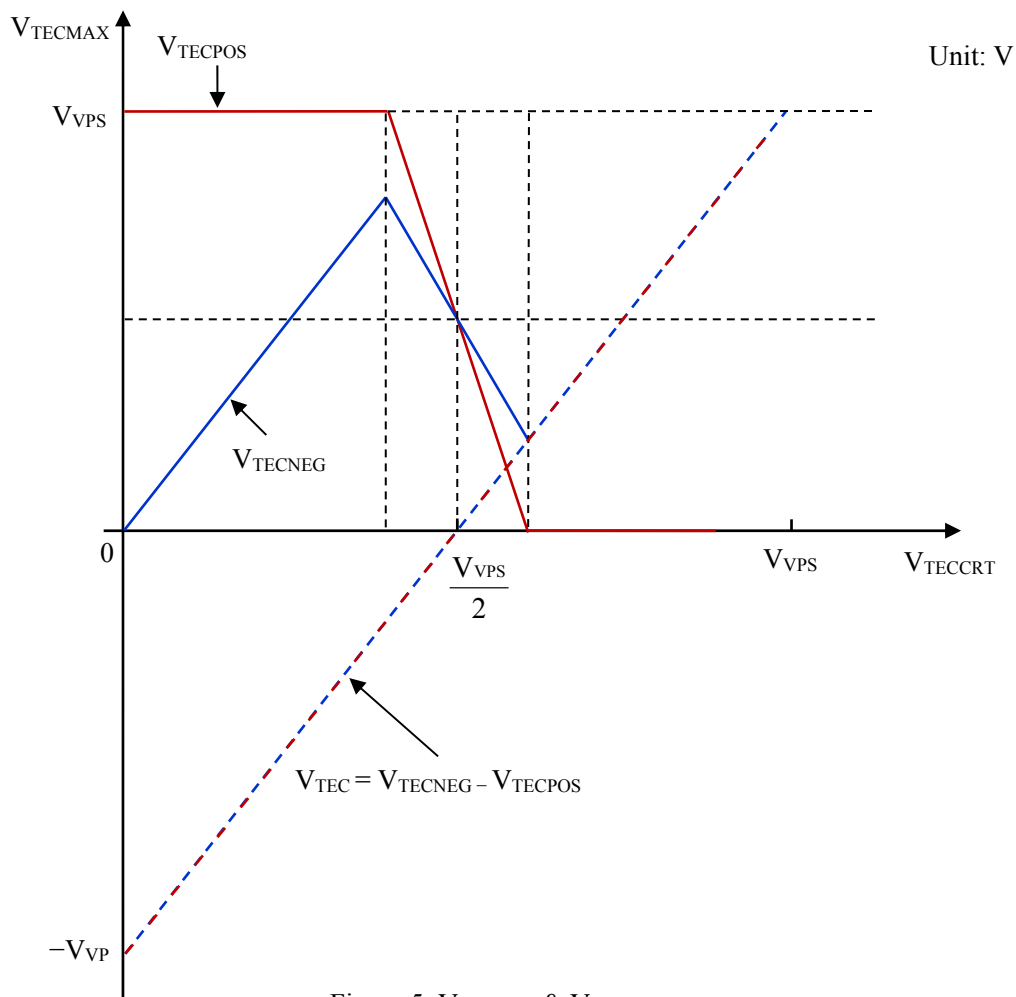


Figure 5.  $V_{TEC\text{MAX}}$  &  $V_{TECRT}$

### V<sub>TEC</sub> & V<sub>TMO</sub> WAVEFORMS

The V<sub>TEC</sub> and V<sub>TMO</sub> waveforms are shown in Figure 6, which change with V<sub>RTH</sub>. We can see that there is no overshoot in the waveforms. V<sub>RTH</sub> changes little, so there's no waveform shown. Figure 7 shows the connection method.

Compensation network: C<sub>d</sub>=16.9uF, R<sub>d</sub>=12.4k, R<sub>i</sub>=1.872M, R<sub>p</sub>=1.373M, C<sub>i</sub>=1.69uF.

Note: Ch1: V<sub>TMO</sub>; Ch2: V<sub>TEC</sub>

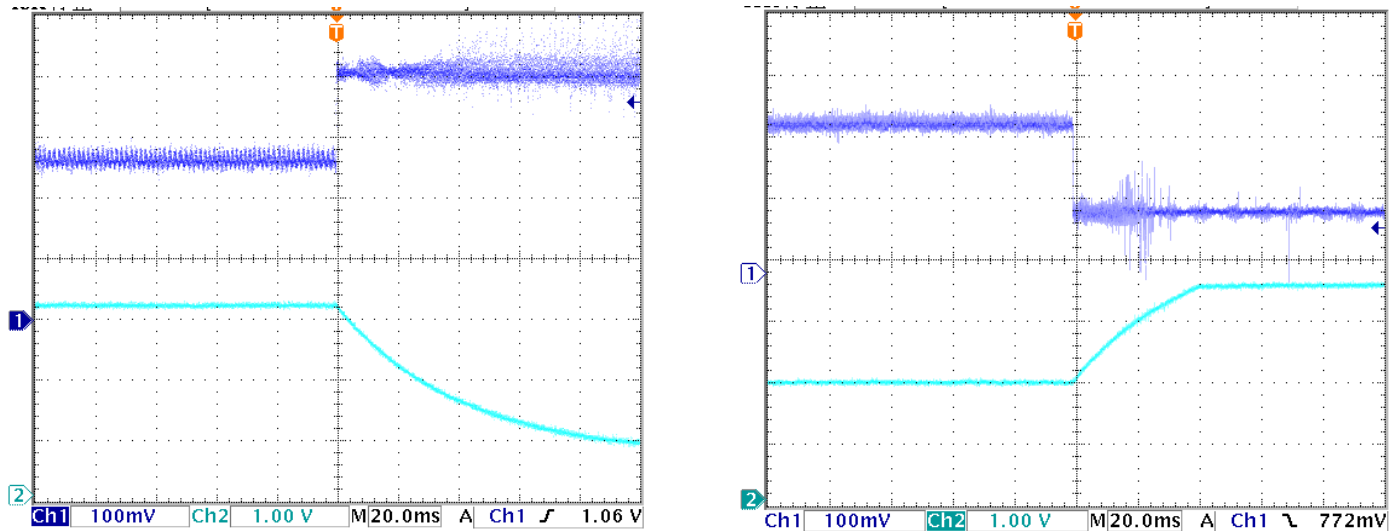


Figure 6. V<sub>TEC</sub> & V<sub>TMO</sub> Waveforms

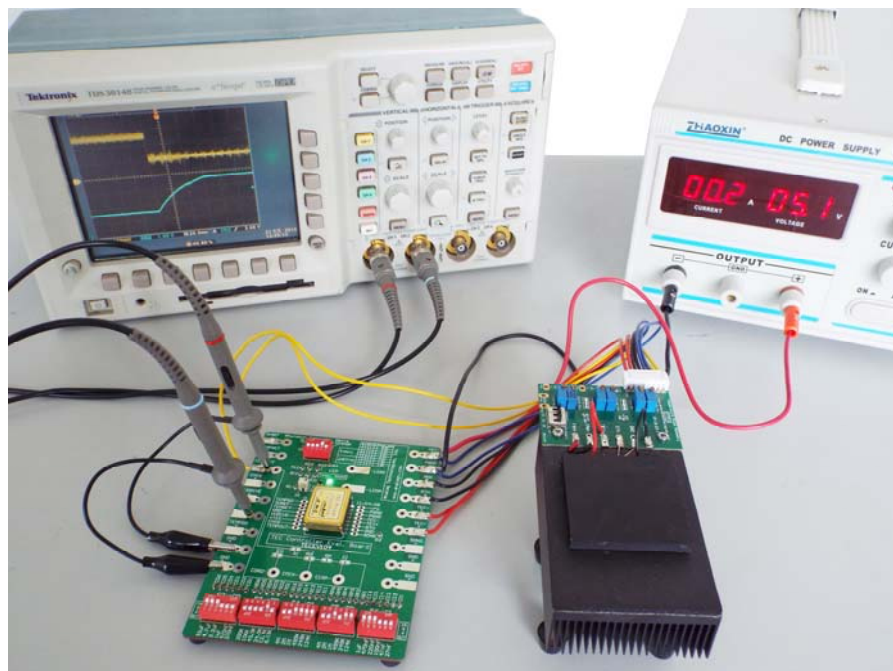


Figure 7. Connection Method

### TEMPGD INTERNAL CIRCUIT

When temperature difference between the actual temperature and the set-point temperature  $< 0.1^{\circ}\text{C}$ , the pull-up resistor R1 of TEMP GD is  $130\Omega$ ; When temperature difference between the actual temperature and the set-point temperature  $> 0.1^{\circ}\text{C}$ , the pull-down resistor R2 of TEMP GD is  $12.7\Omega$ . See Figure 8.

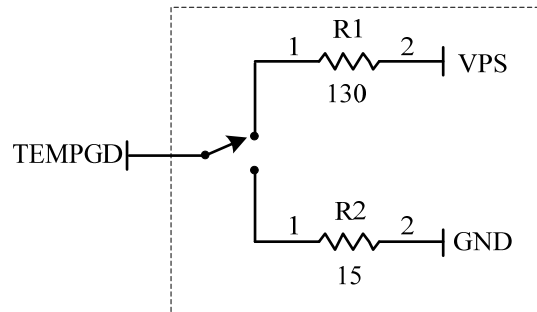


Figure 8. Internal Equivalent Circuit on TEMP GD Pin

**NOTE:** The power supply may have overshoot, when happens, it may exceed the maximum allowed input voltage, 6V, of the controller and damage the controller permanently. To avoid this from happening, do the following:

1. Connect the controller solid well with the power supply before turning on the power.
2. Make sure that the power supply has sufficient output current. It is suggested that the power supply can supply 1.2 to 1.5 times the maximum current the controller requires.
3. When using a bench top power supply, set the current limit to  $>1.5$  times higher than the maximum current the controller requires.

### SPECIAL NOTE

If you experience a high current spike when you change TEMP SP voltage quickly by a large amount, such as  $> 0.1\text{V}$ , a capacitor of  $1\mu\text{F}$  can be added between TECCRT and GND. For TEC controllers manufactured after Nov. 10, 2015, there is no such a problem.

### MECHANICAL DIMENSIONS

Dimensions of the DIP package controller is shown in Figure 9.

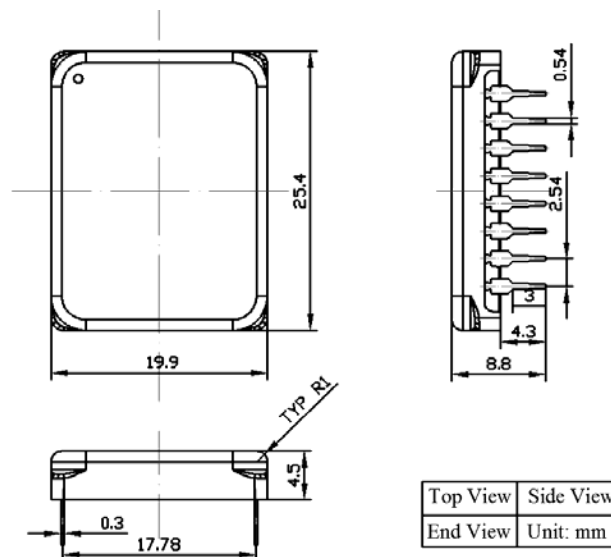


Figure 9. Dimensions of the DIP package controller of TEC5V6A-NT

**WARNING:** Both the surface mount and the through hole types of modules can only be soldered manually on the board by a solder iron of  $< 310^{\circ}\text{C}$  ( $590^{\circ}\text{F}$ ), they cannot go through a reflow oven process.



**ORDERING INFO**

Table 3.

| Part #     | Description  |
|------------|--|
| TEC5V6A-NT | TEC controller without a default temperature setting network<br>TEMP=On@SDNG=0 |

Table 4. Unit Price

| Quantity   | 1 - 9 | 10 - 49 | 50 - 199 | 200 - 499 | ≥500 |
|------------|-------|---------|----------|-----------|------|
| TEC5V6A-NT | \$86  | \$83    | \$80     | \$77      | \$73 |

**SELECTION GUIDE**

| Part #             | V <sub>IN</sub> | V <sub>OUT</sub>  | Dimensions (mm) | Difference  |
|--------------------|-----------------|-------------------|-----------------|---|
| TEC14M5V3R5AS      | 2.7V ~ 5.5V     | ±V <sub>VPS</sub> | 14.0×14.0×2.1   | Micro TEC controller  |
| TEC28V15A          | 5.5V~25V        | ±20V              | 35.7×35.7×7.2   | High voltage high current   |
| TEC5V6A-D          | 4.5V ~ 5.5V     | ±V <sub>VPS</sub> | 25.4×19.9×8.8   | Max.  V <sub>TEMP</sub> - V <sub>TEMPSP</sub>   ≤ 5mV                     |
| TEC5V6A-DA         | 4.5V ~ 5.5V     | ±V <sub>VPS</sub> | 25.4×19.9×8.8   | Max.  V <sub>TEMP</sub> - V <sub>TEMPSP</sub>   ≤ 2mV                     |
| TEC5V6A-DAH        | 4.5V ~ 5.5V     | ±V <sub>VPS</sub> | 25.4×19.9×8.8   | Max.  V <sub>TEMP</sub> - V <sub>TEMPSP</sub>   ≤ 0.5mV                   |
| TEC5V6A-NT         | 4.5V ~ 5.5V     | ±V <sub>VPS</sub> | 25.4×19.9×8.8   | No internal temperature range setting network                             |
| TEC5V4A-D          | 4.5V ~ 5.5V     | ±V <sub>VPS</sub> | 25.4×19.9×8.8   | TEMP=On@SDNG=0<br>Max.  V <sub>TEMP</sub> - V <sub>TEMPSP</sub>   ≤ 5mV   |
| TEC5V4A-DA         | 4.5V ~ 5.5V     | ±V <sub>VPS</sub> | 25.4×19.9×8.8   | TEMP=On@SDNG=0<br>Max.  V <sub>TEMP</sub> - V <sub>TEMPSP</sub>   ≤ 2mV   |
| TEC5V4A-DB         | 4.5V ~ 5.5V     | ±V <sub>VPS</sub> | 25.4×19.9×8.8   | TEMP=Off@SDNG=0<br>Max.  V <sub>TEMP</sub> - V <sub>TEMPSP</sub>   ≤ 2mV  |
| TEC5V4A-DAH        | 4.5V ~ 5.5V     | ±V <sub>VPS</sub> | 25.4×19.9×8.8   | TEMP=On@SDNG=0<br>Max.  V <sub>TEMP</sub> - V <sub>TEMPSP</sub>   ≤ 0.5mV |
| TEC5V4A-NT         | 4.5V ~ 5.5V     | ±V <sub>VPS</sub> | 25.4×19.9×8.8   | No internal temperature range setting network                             |
| TECA1-xV-xV-DAH    | 3.3V/5.5V       | ±V <sub>VPS</sub> | 25.4×19.9×8.8   | TEMP=On@SDNG=0<br>Max.  V <sub>TEMP</sub> - V <sub>TEMPSP</sub>   ≤ 0.5mV |
| TECA1-xV-xV-DAH-OP | 3.3V/5.5V       | ±V <sub>VPS</sub> | 25.4×19.9×8.8   | Remove two 100kΩ internal resistors                                       |
| TECA1LD-xV-xV-DAH  | 3.3V/5.5V       | ±V <sub>VPS</sub> | 25.4×19.9×8.8   | With internal compensation network  |
| TECA1-xV-xV-D      | 3.3V/5.5V       | ±V <sub>VPS</sub> | 25.4×19.9×8.8   | TEMP=On@SDNG=0<br>Max.  V <sub>TEMP</sub> - V <sub>TEMPSP</sub>   ≤ 5mV   |
| TECA1-xV-xV-DB     | 3.3V/5.5V       | ±V <sub>VPS</sub> | 25.4×19.9×8.8   | TEMP=Off@SDNG=0<br>Max.  V <sub>TEMP</sub> - V <sub>TEMPSP</sub>   ≤ 5mV  |
| TECA1-xV-xV-D-OP   | 3.3V/5.5V       | ±V <sub>VPS</sub> | 25.4×19.9×8.8   | Remove two 100kΩ internal resistors                                       |
| TECA1LD-xV-xV-D    | 3.3V/5.5V       | ±V <sub>VPS</sub> | 25.4×19.9×8.8   | With internal compensation network  |
| TECA1-5V5V-NT      | 5V              | ±V <sub>VPS</sub> | 25.4×19.9×8.8   | No internal temperature range setting network                             |
| TECA2-xV-xV-DAH    | 4.5V ~ 5.5V     | ±V <sub>VPS</sub> | 20.14×14.6×8.0  | Smaller size  |





**NOTICE**

1. ATI warrants performance of its products for one year to the specifications applicable at the time of sale, except for those being damaged by excessive abuse. Products found not meeting the specifications within one year from the date of sale can be exchanged free of charge.
2. ATI reserves the right to make changes to its products or to discontinue any product or service without notice, and advise customers to obtain the latest version of relevant information to verify, before placing orders, that information being relied on is current and complete.
3. All products are sold subject to the terms and conditions of sale supplied at the time of order acknowledgment, including those pertaining to warranty, patent infringement, and limitation of liability. Testing and other quality control techniques are utilized to the extent ATI deems necessary to support this warranty. Specific testing of all parameters of each device is not necessarily performed, except those mandated by government requirements.
4. Customers are responsible for their applications using ATI components. In order to minimize risks associated with the customers' applications, adequate design and operating safeguards must be provided by the customers to minimize inherent or procedural hazards. ATI assumes no liability for applications assistance or customer product design.
5. ATI does not warrant or represent that any license, either express or implied, is granted under any patent right, copyright, mask work right, or other intellectual property right of ATI covering or relating to any combination, machine, or process in which such products or services might be or are used. ATI's publication of information regarding any third party's products or services does not constitute ATI's approval, warranty or endorsement thereof.
6. IP (Intellectual Property) Ownership: ATI retains the ownership of full rights for special technologies and/or techniques embedded in its products, the designs for mechanics, optics, plus all modifications, improvements, and inventions made by ATI for its products and/or projects.