



Figure 1. 3D View



Figure 4. Back View



Figure 2. Front View



Figure 5. Cantilever Latch Design



Figure 3. Side View



Figure 6. Multi-functional and Retrievable



FEATURES

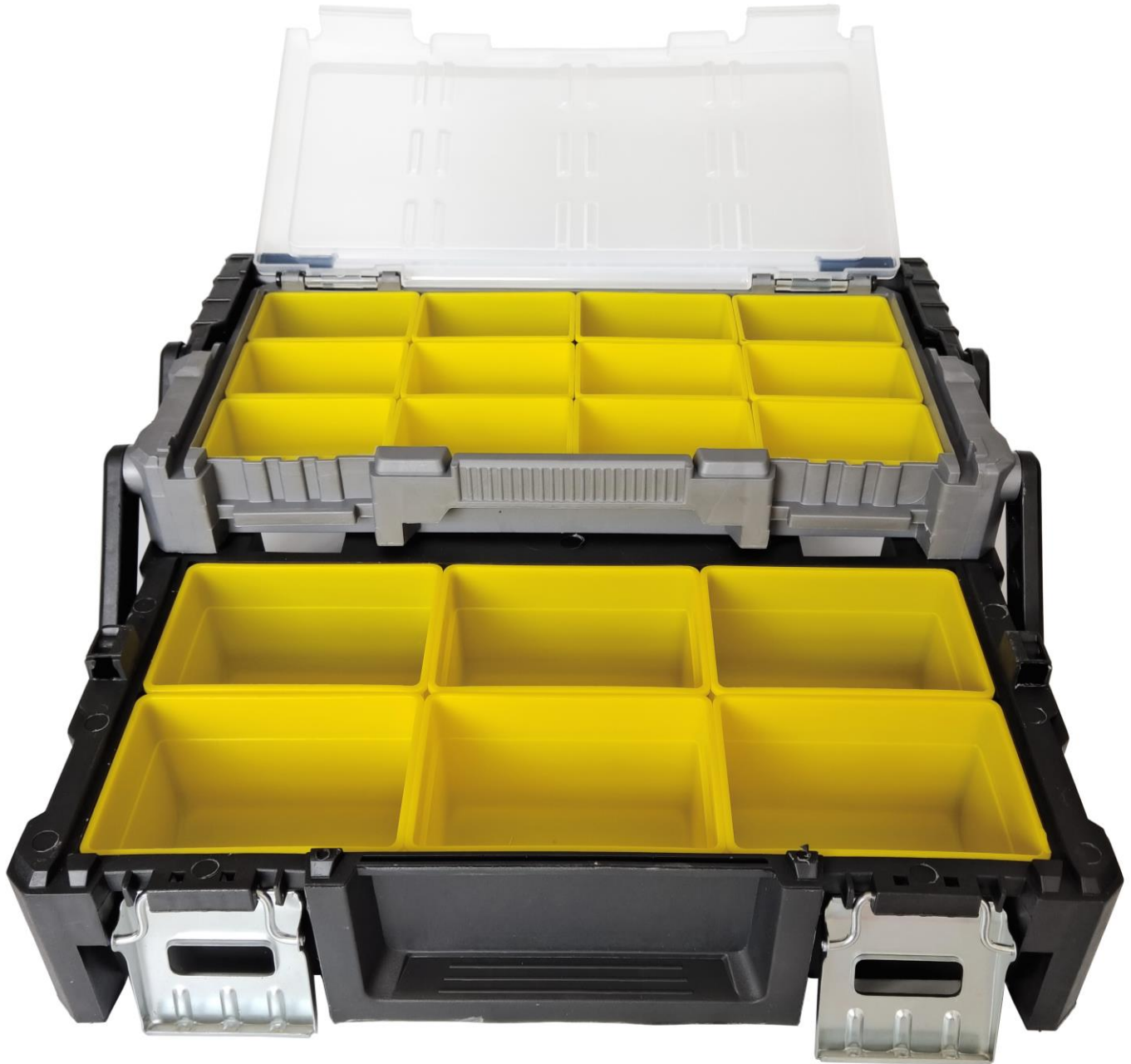
- **Portable Storage Box:** Crafted with a compact, portable, and durable design. Facilitates easy carrying for on-the-go maintenance work.
- **Multi-Layered Structure:** Consists of 2 layers with 18 bins, ensuring efficient storage. Allows simultaneous access to both layers for quick retrieval upon opening. Each bin can be individually removed for convenient usage when only one bin is needed.
- **Space-Efficient Design:** Expands to provide simultaneous access to all components. Overlapping the 2 layers upon closing creates a small storage footprint.
- **Cantilever Latch Security:** Prevents accidental opening during transportation.
- **Environmentally Conscious Material:** Constructed from PP, offering durability and health benefits. Complies with environmental standards.
- **Cost and Time Savings:** Eliminates the need for trips to Home Depot for buying individual screws. Saves money compared to purchasing screws individually.

APPLICATIONS

- **Construction and Carpentry Projects:** Professionals such as architects, carpenters, and maintenance personnel can use such a box to conveniently carry and use nails, dowels, washers, and screws, etc., thereby improving work efficiency.
- **DIY and Home Repairs:** Suitable for home users engaging in DIY projects or repair work, enabling them to conveniently organize and store nails of various sizes.
- **Art and Craft Projects:** For those involved in art or craft projects, such a box can also be used to store various small decorations and components used for decoration and assembly.
- **Overall,** this design is intended to provide an organized, portable, and easily manageable way for users to access components conveniently during work or creative endeavors.



The layout of Storage Box





DIMENSIONS

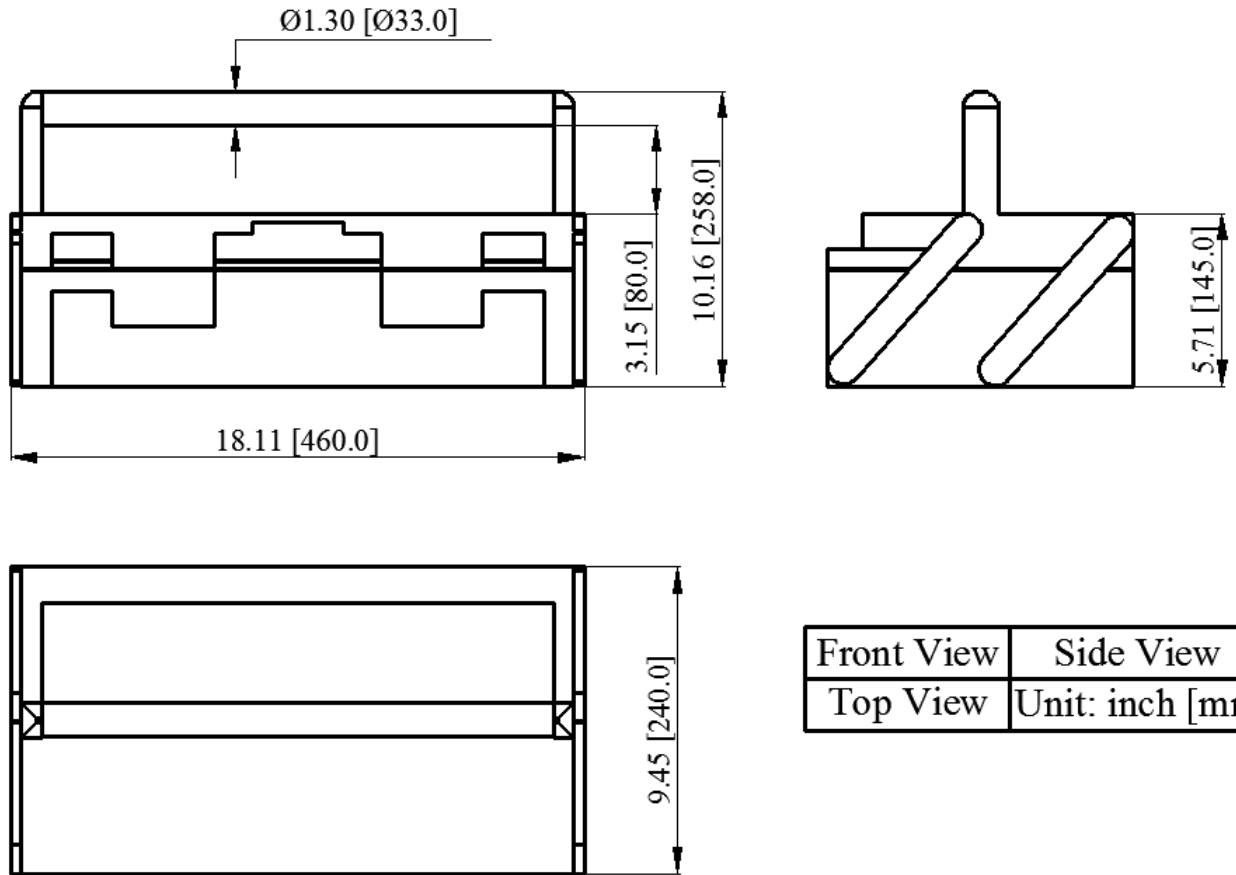



Figure 7. Outline Dimensions

ORDERING INFORMATION

Part Number	Buy Now
DLSB1206	 *

NOTICE

1. It is important to carefully read and follow the warnings, cautions, and product-specific notes provided with electronic components. These instructions are designed to ensure the safe and proper use of the component and to prevent damage to the component or surrounding equipment. Failure to follow these instructions could result in malfunction or failure of the component, damage to surrounding equipment, or even injury or harm to individuals. Always take the necessary precautions and seek professional assistance if unsure about proper use or handling of electronic components.
2. Please note that the products and specifications described in this publication are subject to change without prior notice as we continuously improve our products. Therefore, we recommend checking the product descriptions



and specifications before placing an order to ensure that they are still applicable. We also reserve the right to discontinue the production and delivery of certain products, which means that not all products named in this publication may always be available.

3. This means that while ATI may provide information about the typical requirements and applications of their products, they cannot guarantee that their products will be suitable for all customer applications. It is the responsibility of the customer to evaluate whether an ATI product with the specified properties is appropriate for their particular application.
4. ATI warrants its products to perform according to specifications for one year from the date of sale, except when damaged due to excessive abuse. If a product fails to meet specifications within one year of the sale, it can be exchanged free of charge.
5. ATI reserves the right to make changes or discontinue products or services without notice. Customers are advised to obtain the latest information before placing orders.
6. All products are sold subject to terms and conditions of sale, including those pertaining to warranty, patent infringement, and limitation of liability. Customers are responsible for their applications using ATI products, and ATI assumes no liability for applications assistance or customer product design.
7. ATI does not grant any license, either express or implied, under any patent right, copyright, mask work right, or other intellectual property right of ATI.
8. ATI's publication of information regarding third-party products or services does not constitute approval, warranty, or endorsement.
9. ATI retains ownership of all rights for special technologies, techniques, and designs for its products and projects, as well as any modifications, improvements, and inventions made by ATI.
10. Please note that despite operating the passive electronic components as specified, malfunctions or failures before the end of their usual service life may still occur in individual cases due to the current state of the art. Therefore, in customer applications that require a high level of operational safety, especially those in which the malfunction or failure of a passive electronic component could pose a threat to human life or health (such as in accident prevention or life-saving systems), it is essential to ensure through suitable design of the customer application or other measures taken by the customer (such as the installation of protective circuitry or redundancy) that no injury or damage is sustained by third parties in the event of a passive electronic component malfunction or failure.